

DP  
180

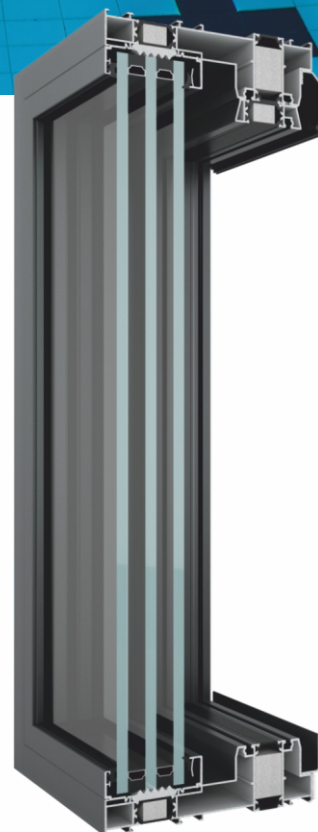
EXCELLENT THERMAL INSULATION PROPERTIES

#### DP 180 - SYSTEM FEATURES

DP 180 is a system dedicated to manufacturing of overhead sliding doors for external purposes.

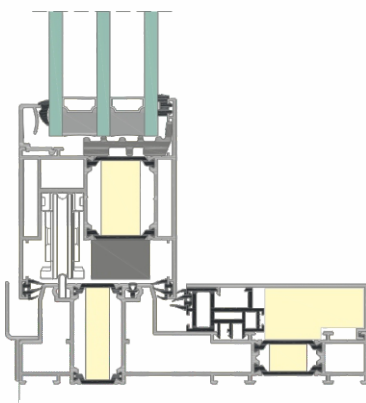
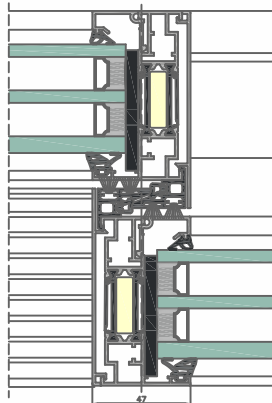
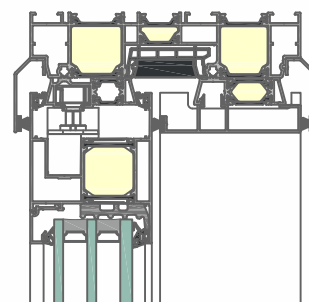
DP 180 system is a modern solution based on aluminium profiles with thermal separators. The construction of DP 180 helps to reduce heat energy losses, thus decreasing heating costs of designed objects. This product is suitable for residential buildings and for public utility buildings.

Photo: Single - family house

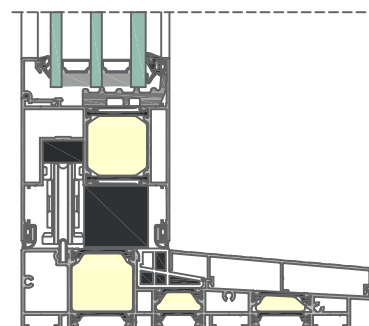


## ADVANTAGES OF THE SYSTEM

- excellent thermal insulation -  $U =$  from 0,19 Btu/hft<sup>2</sup>F,
- infill thickness up to 2,44 ",
- possibility of manufacturing doors of very large dimensions and leaf weight even 947 lbs,
- possibility of manufacturing all-glass corner connection angled 90°,
- possibility of manufacturing doors with lowered, integrated threshold - no architectural barriers,
- very good water tightness and air permeability parameters,
- possibility of installation of automatic doors opening/closing system,
- possibility of using fittings with micro ventilation,
- possibility of infill assembly from the outside,
- possibility of connecting glass panes without sash bars,
- movable corner mullion,
- possibility of combination with other Yawal systems.

SECTION OF THE  
DP 180 DOORSECTION OF THE LEAF  
CONNECTIONSECTION OF THE DP 180  
DOOR WITH AUTOMAT

SECTION OF THE DP 180 DOOR - LOW THRESHOLD



ASSEMBLY OF AUTOMATIC DOOR OPENING  
MECHANISM IS AN ADDITIONAL OPTION

## TECHNICAL PARAMETERS - DP 180

Profiles width	Frame: 7,08 ", Leaf: 3,19 "
Infill thickness	0,7 " ÷ 2,4 "
Gaskets	EPDM, TPE
Leaf weight	max. 947 lbs
Leaf height	max. 129 "
Leaf width	max. 129 "
Air permeability	class 4 acc. to PN-EN 12207
Water tightness	class E1350 acc. to PN-EN 12208
Heat transfer coefficient	$U =$ from 0,19 Btu/hft <sup>2</sup> F
Wind load resistance	class C3 acc. to PN-EN 12210
Anti-theft protection	class RC 2 acc. to PN-EN 1627
Acoustic insulation	47 dB acc. to PN-EN ISO 12999-1